

SmartETL

synchronizing data by your rules

Data is collected, stored, protected and analyzed in ever growing, massive quantities. Not always in compatible formats. Not always in line with your plans.

When database-driven systems need to share common data on a regular basis and build on this data independently — you need a solution on which you can rely.

Intelligent ETL

Myxa's SmartETL brings intelligent ETL (extract, transform and load) to data migration and data synchronization applications.

- Loads/Updates are self correcting. Successive SmartETL executions do not corrupt or duplicate data.
- SmartETL executions can be interrupted and restarted. Updates will continue from where they left off.
- SmartETL automatically determines what has changed and updates only those records that need updating.
- SmartETL extract functions can run independently from update functions — different times and systems.
- SmartETL can be used as a standalone extract function — for intelligent data extracts.
- SmartETL's modular construction allows for rapid adaptation to new database formats or to third-party systems via their API.

No Programming

Managing databases doesn't have to be an ongoing drain on programming resources — save 25 to 30 percent of project time. Data migration and synchronization can be done without programming. SmartETL supports rule-based transforms.

Simplified Support

SmartETL can handle virtually all batch-level data load, migration and synchronization needs. SmartETL is a time-tested utility backed by Myxa.

Easy to Integrate

Activities are focused on defining data mapping and transformation rules. Text configuration files are easy to maintain and archive. Log files document changes.

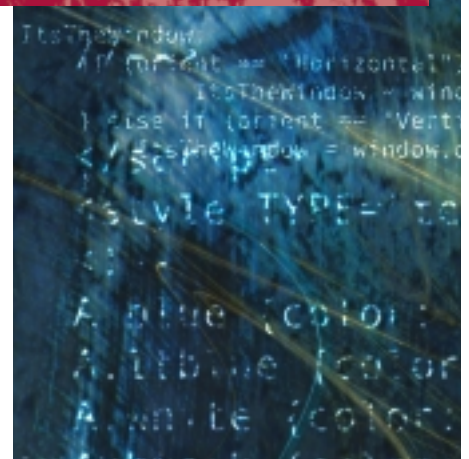
SmartETL simplifies testing. Testing only needs to address mapping and transformation rules.

Flexible, Reliable, Fast and Extensible

Define at runtime which data sources and target database will be touched and choose which map files to use.

SmartETL runs on the server to maximize performance. Decision logic can be extended using industry standard Perl syntax.

Find out how to get the SmartETL competitive advantage — regulated, easily-managed databases.



SmartETL Applications

- Data and Data migration
- Migrate from an old system to a new system
- Schema changes
- Build a realistic anonymous test database from production data
- Load data warehouses / data marts
- Consolidate and synchronize from multiple data sources
- Transform and load data into a reports server
- Intelligent data reorganization
- Discovery, standardization and management of data
- Data warehouse and archive database environments where historical data needs to be maintained

System Requirements

- Runs on UNIX platforms
 - Sun/Solaris 2.X
 - HPUX
 - AIX
 - Linux
- Required support software
 - Perl
 - Perl DBI modules
- Supported data sources / targets
 - Oracle
 - Sybase
 - DB2
 - Delimited files
 - MySQL
 - Fixed format files



610-234-2600

www.myxa.com

Myxa Corporation | Suite 302 | 525 Plymouth Rd. | Plymouth Meeting, PA 19462-1640 | Voice: 610-234-2600 | Fax: 610-234-2640

© Myxa 2003 ps-ETL-20030409-3